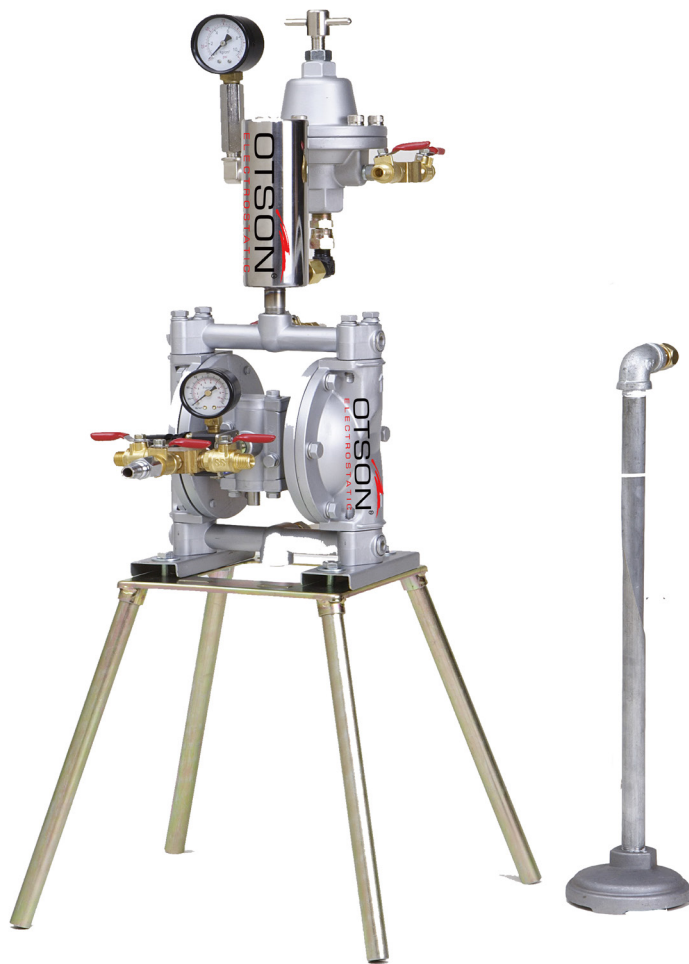


OTS-10

AIR

POWERED DOUBLE DIAPHRAGM PUMP



Features

- Safety
- Long Life Operation
- Paint Concentration
- Max Capacity **16 Liters/min**
- Max Pressure **100psi / 7 bar**
- Light Weight
- Easy to Handle
- Low Maintenance
- For Electrostatic Spray gun

HYBRID

Solvent

Waterborne

DUAL
Coating

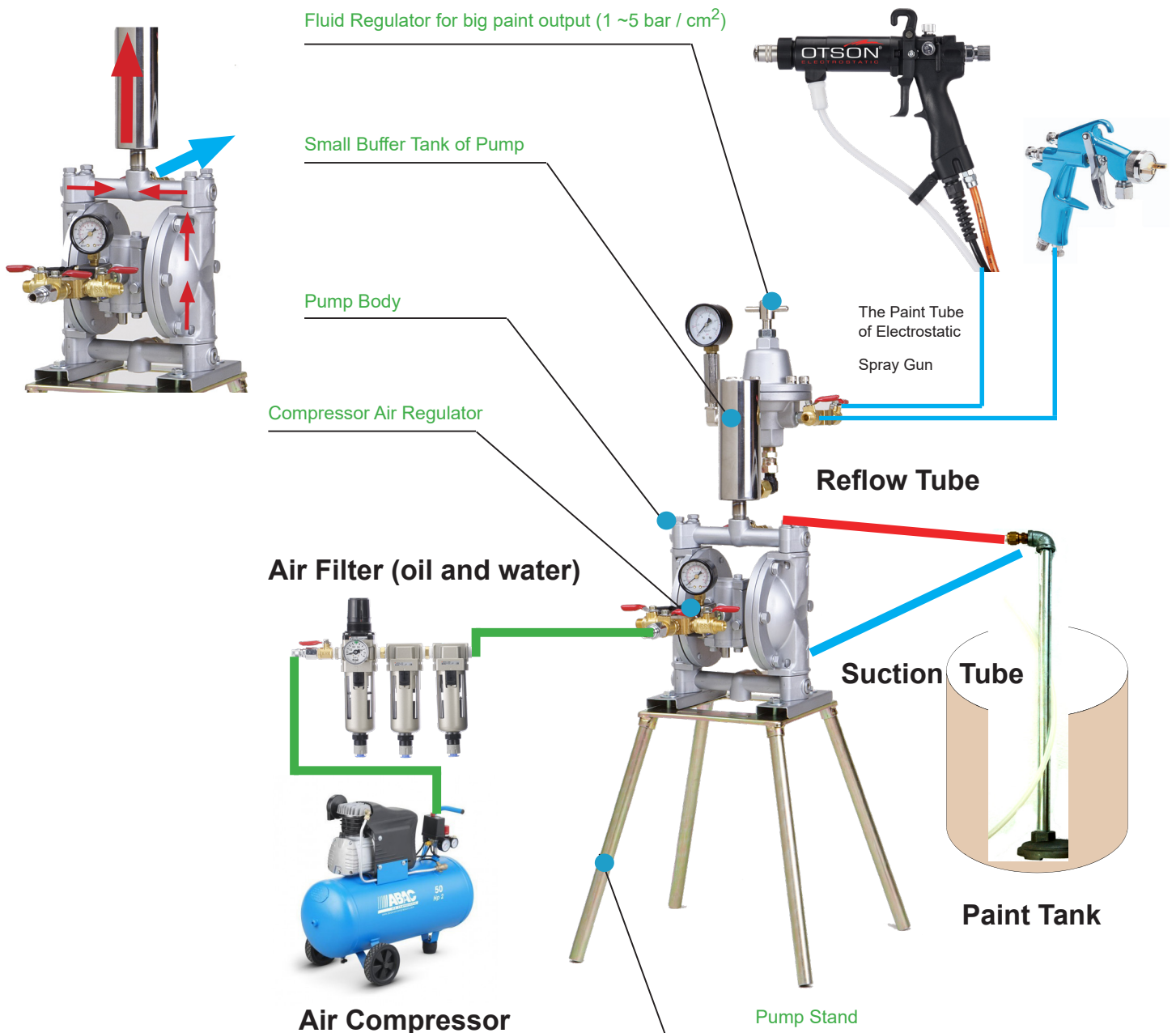
H.E.T
High Efficiency Technology

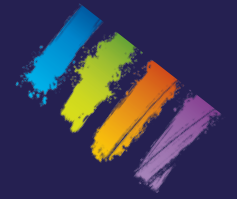
Innovative Technologies of

Liquid Electrostatic Coating Solutions






The diaphragm pump is consisted of two diaphragm chambers and two diaphragms. The diaphragms are connected to each other with a diaphragm rod and move in a reciprocating action. As one diaphragm performs the discharge stroke, the other diaphragm which is connected with the rod is pulled to perform the suction. At the end of the stroke, an air distribution valve automatically shifts, reversing the entire sequence, filling and pumping from alternate chambers. Mutual movements that repeated continuously ensure suction and discharge movements onto the fluids in each chamber. Continuously repeated reciprocal motions pump the liquid during entering to and exiting from the chambers. The flow of the fluid from one chamber to another is regulated by the suction and discharge valves.

The ball and butterfly valves automatically controls the fluid suction and discharge of the fluid. The butterfly valves allow passage of the solid particles with a size up to diameter of the pipe. The ball valves regulate passage of the small-size particles.



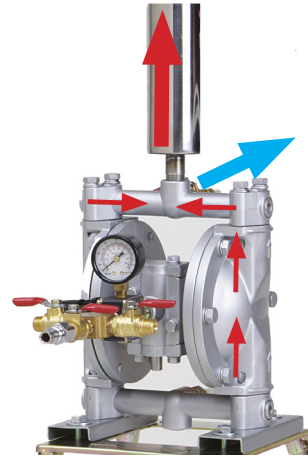
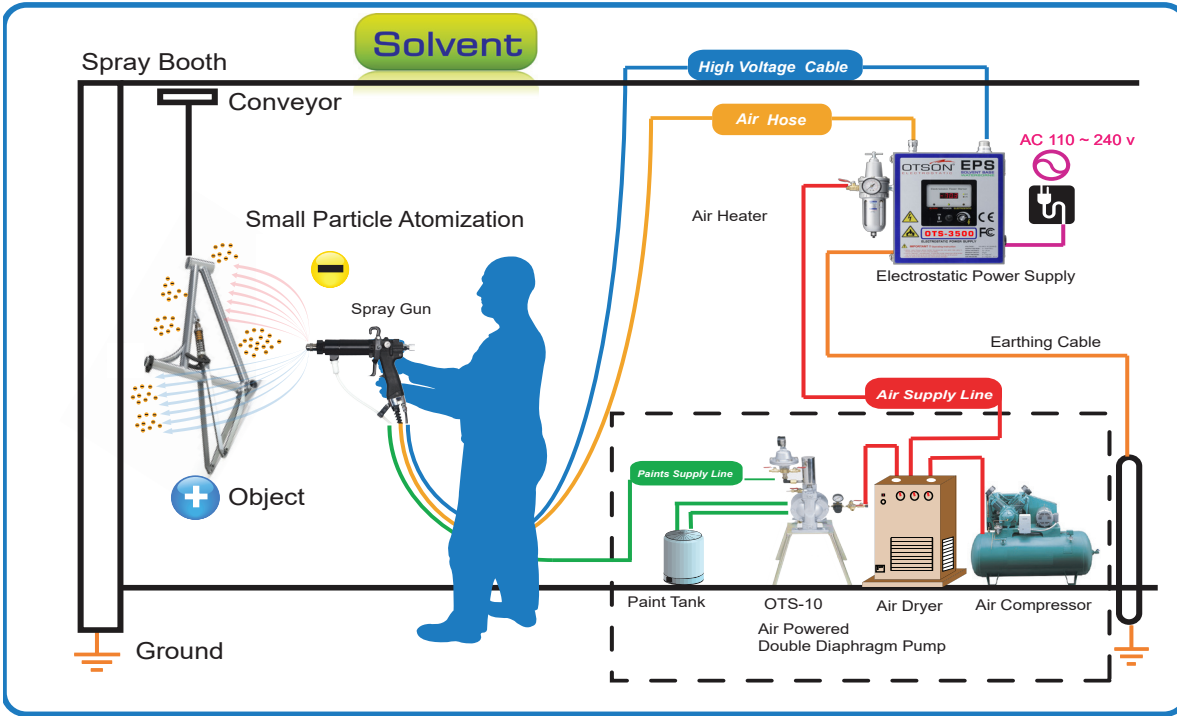


Ordering Information

Specification	OTS-10	OTS-10-B	OTS-10-3EA
			
Pump Body	Aluminum (ADC-12)	Aluminum (ADC-12)	Aluminum (ADC-12)
Diaphragm Material	Teflon (PTFE)	Teflon (PTFE)	Teflon (PTFE)
Fluid Regulator	NA	For 2 Spray guns	For 1 Spray gun
	NA		
Stable fluid /paint output flow	NA	4~5 kg /cm ²	1~2 kg /cm ²
Fluid Input Size	3/8 " (inch)	3/8 " (inch)	3/8 " (inch)
Max Air Supply Pressure	7 Bar	7 Bar	7 Bar
Air input Size	1/4 " NPT	1/4 " NPT	1/4 " NPT
Paint output Size	1/4 " NPT	1/4 " NPT	1/4 " NPT
Min Starting Pressure	0.5 Bar	0.5 Bar	0.5 Bar
Min Starting Pressure	1.6 Bar	1.6 Bar	1.6 Bar
Max Delivery	16 liters /min	16 liters /min	16 liters /min
Each Cycle Capacity	9 cc	9 cc	9 cc
Max Air Consumption Capacity	200 L/min	200 L/min	200 L/min
Net Weight Kg	7.0 kg	10.0 Kg	9.0 kg



Application- Air Powered Double Diaphragm Pump



Dual Coating for Solvent and Waterborne Paint



HYBRID



OTS - 3000+
Manual Liquid Electrostatic Spray Gun



OTS - 20
HVLV Spray Gun

Purpose

- General Spray Gun , Auto Spray Gun, Electrostatic Spray Gun for Spray Painting .
- Printing ink circular materials sending.

Paints

PU coatings ,General coatings ,UV special coatings ,Liquid coatings ,Waterborne coatings
Solvent coatings

*The appearance of all products, detail, figure and specification are subject to change at any time without notice.

Copyright © OTSON is a registered trademark of OTSON Technologies Corp. All other names and brands may be claimed as the property of others.



OTSON Technologies Corp.

1F., No.20, Lane 211, Huacheng Rd., Sinjhuang City,
NEW Taipei City 242, Taiwan (R.O.C.)

http://www.otson.com e-mail : sales@otson.com

Tel : 886+2+2659-7162 Fax : 886+2+8192-6058

